



SRI S+ Digital Lock

By ProBuild Solutions

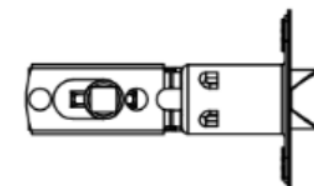
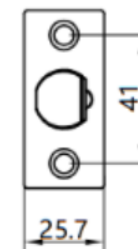
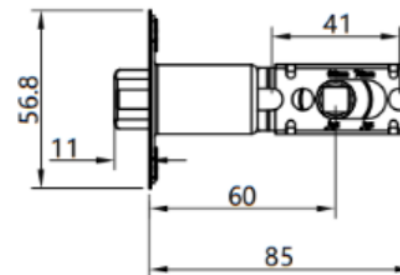
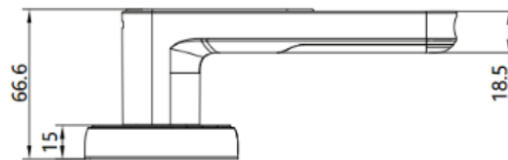
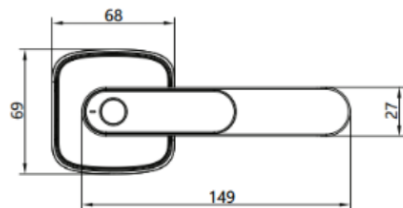
SRI-K01

One way Lock

-
- Classroom
 - Lab
 - Warehouse
 - Server room
 - Office



SRI-K01 Specification



BASIC SPECIFICATION

Access way :	Fingerprint + Mechanical Key + Tuya Bluetooth App	
Capacity	20Pcs (1PCS Administrator + 19PCS Normal User)	
System Information	\	
Size	Handle: 149mm*27mm Aluminum Alloy Rosset Size: 68mm	
Mortise Lock	Bolts (Zinc Alloy), Plate (304 stainless Steel) / Backset: 60mm & 70mm	
Fingerprint	Fingerprint Type	RF Semiconductor (AI Learning function)
	Reading Time	<0.5S
	Size	φ14mm
Electric Character	Static Current	≤ 30μA
	Dynamic Current	≤ 140mA
Power	Battery:	4PCS* AAA Alkaline Battery
	Emergency Power	Micro USB
	Alarming Voltage	4.3V



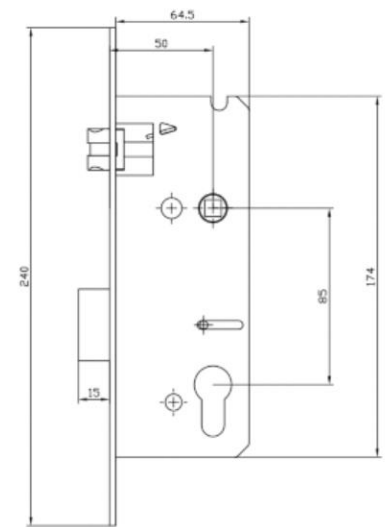
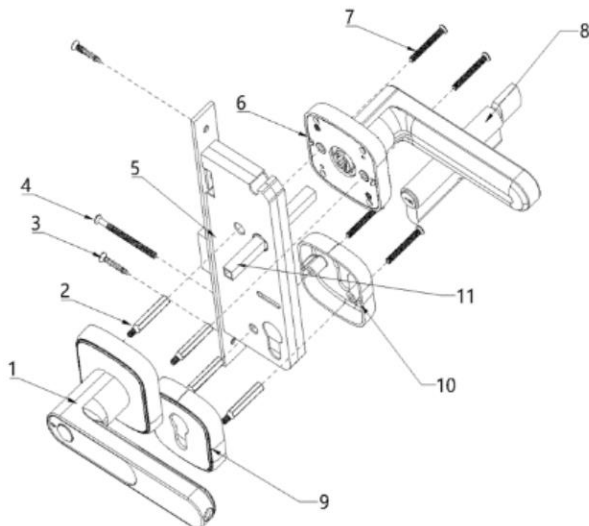
SRI-K02

- Meeting Room
- Board Room
- Tenanted room
- Co-living room
- Bedroom





SRI-K02 Specification



BASIC SPECIFICATION

Access way :	Fingerprint + Mechanical Key + Tuya Bluetooth App.	
Capacity	20Pcs (1PCS Administrator + 19PCS Normal User)	
System Information	\	
Size	Handle: 165.5mm*69mm Aluminum Alloy Rosset Size: 68mm	
	Cylinder Cover: 60mm*60mm*16.2mm	
Mortise Lock	J5085 European Mortise Lock (304 stainless Steel) / Backset: 60mm	
Fingerprint	Fingerprint Type	RF Semiconductor (AI Learning function)
	Reading Time	<0.5S
	Size	φ14mm
Electric Character	Static Current	≤30μA
	Dynamic Current	≤140mA
Power	Battery:	4PCS* AAA Alkaline Battery
	Emergency Power	USB Micro Interface
	Unlocking Records	10000PCS
	Alarming Voltage	4.3V

SRI-K09

- Aluminium framed door like
- Swing door
- Slide and fold door
- Sliding door handle





BASIC SPECIFICATION

Access Way	Fingerprint / Password / IC Card
Capacity	100pcs (1pc Admin + 99pcs Normal)
Fingerprint Method	Semiconductor
Power supply	6V (4pcs dry cell)
Quiescent Current	< 60mA
Password No	6-10 digits
Passage Mode	Yes
Resolution Rate	500DPI
Mobile App	Wifi
Working Temperature	-20°C to 70°C
Relative Humidity	20% - 93%
False Rejection Rate	≤ 0.15%
False Accept Rate	≤ 0.00004%
Plate Materials	Aluminium
Emergency Power	USB
Door Depth Requirement	35mm – 60mm
Size	36mm X 320mm
Waterproof Grade	IP65

SRI-K09 Specification

SRI-G2A

- Glass doors
- Swing door
- Slide and fold door
- Sliding door



BASIC SPECIFICATION

Core functions	G2A
SIZE	90*70*25mm
BATTERY	AA Battery X 4
OPENNING WAY	PASSWORD+ FINGER PRINT+ CARD+ KEY
VOLTAGE	DC6V
MATERIAL	ALUMINUM
TEMPERATURE	-20° - 60°
HUMIDITY	10%-90% RH
FINGER SENSOR	SEMICONDUCTOR
KEYBOARD	TOUCHPAD
USER	PASSWORD: 100 ; FINGER PRINT: 100 ; CARD: 100
VERIFY TIME	≤ 300ms
REJECTION RATIO	≤ 0.1%
ADMISSION RATIO	<0.0001%
DOOR THICKNESS	12mm



SRI-G2A Specification